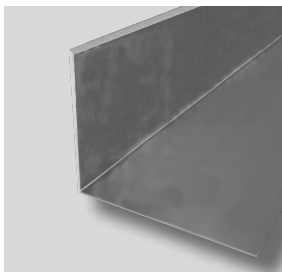


## TECHNICAL DATA SHEET

### ND KL-60 Gravel Edge Profile



ND KL-60 Gravel Edge Profile

The ND KL-60 Gravel Edge Profile is an L-shaped water-permeable edge profile made out of aluminium. The single ND KL-60 Gravel Edge Profiles are connected through the ND KL-V-60 Connectors.

#### Application

- Nophadrain Extensive Green Roof Systems

#### Properties

- Material: aluminium

Product	Dimensions (L x W x H)	Packaging
ND KL-60 Gravel Edge Profile	approx. 2,400 mm x 100 mm x 60 mm	per piece

**nophadrain**<sup>®</sup>  
SMART GREEN ROOF SYSTEMS

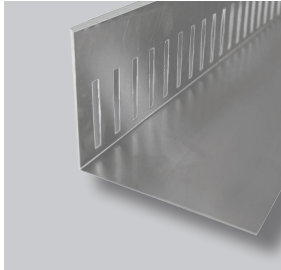
**Nophadrain BV**  
Mercuriusstraat 10  
6468 ER Kerkrade  
The Netherlands

+31 (0)45 535 50 30  
info@nophadrain.com

[www.nophadrain.com](http://www.nophadrain.com)

## TECHNICAL DATA SHEET

### ND KL-80 Gravel Edge Profile



ND KL-80 Gravel Edge Profile

The ND KL-80 Gravel Edge Profile is an L-shaped water-permeable edge profile made out of aluminium. The single ND KL-80 Gravel Edge Profiles are connected through the ND KL-V-80 Connectors.

#### Application

- Nophadrain Extensive Green Roof Systems

#### Properties

- Material: aluminium
- Slots: approx. 50 pieces per meter, approx. 40 mm x 5 mm

Product	Dimensions (L x W x H)	Packaging
ND KL-80 Gravel Edge Profile	approx. 2,400 mm x 100 mm x 80 mm	per piece

**nophadrain**<sup>®</sup>  
SMART GREEN ROOF SYSTEMS

**Nophadrain BV**  
Mercuriusstraat 10  
6468 ER Kerkrade  
The Netherlands

+31 (0)45 535 50 30  
info@nophadrain.com

[www.nophadrain.com](http://www.nophadrain.com)