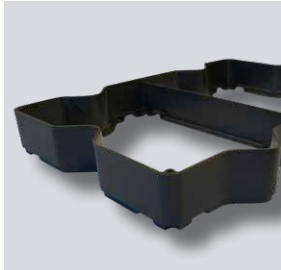


## TECHNICAL SPECIFICATION

### ND ESW-80 Erosion Protection Grid



ND ESW-80  
Erosion Protection Grid

The ND ESW-80 Erosion Protection Grid is being used in extensive green roofs with a slope of 20 - 45 degrees. The cells of the ND ESW-80 Erosion Protection Grid are made of recycled polypropylene. Because of its size and shape the cells can be installed fixed to each other, which makes the construction very strong. In all the corners there have been screw holes applied to attach the sedum blankets. On the bottom there have been made cutouts so the water can flow through.

#### Application

The ND ESW-80 Erosion Protection Grid is a component of the Nophadrain Extensive Green Roof System – steep pitched roof.

#### Properties

- Material: polypropylene (PP)
- Colour: black
- Weight: 3,751 g/m<sup>2</sup>

| Product                           | Dimensions (L x W x H) |
|-----------------------------------|------------------------|
| ND ESW-80 Erosion Protection Grid | 400 x 640 x 80 mm      |

**nophadrain**<sup>®</sup>  
SMART GREEN ROOF SYSTEMS

#### Nophadrain BV

Mercuriusstraat 10  
6468 ER Kerkrade  
The Netherlands

+31 (0)45 535 50 30  
info@nophadrain.com

[www.nophadrain.com](http://www.nophadrain.com)